

Governing Authority



Contractor



Site plan Overview - Phase 1
Road Closure - Temporary Detour Route
Railway Street and Laut Avenue - Ross Street
Crossfield, Alberta

Gazetted speed



Delineator Spacing

06
meters

Date

March 17
2020

Designed

BPC
Checked
CL

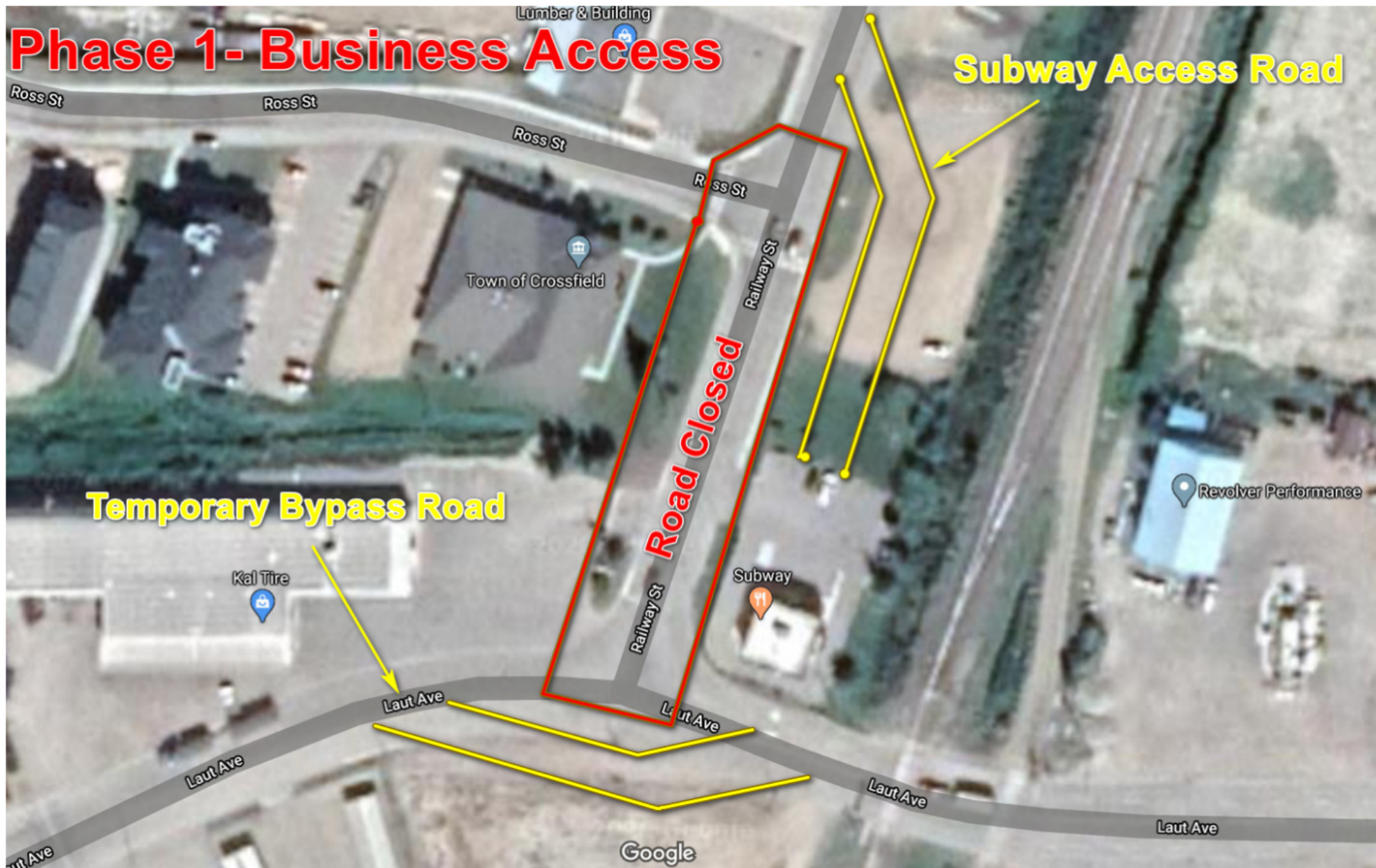
Scale

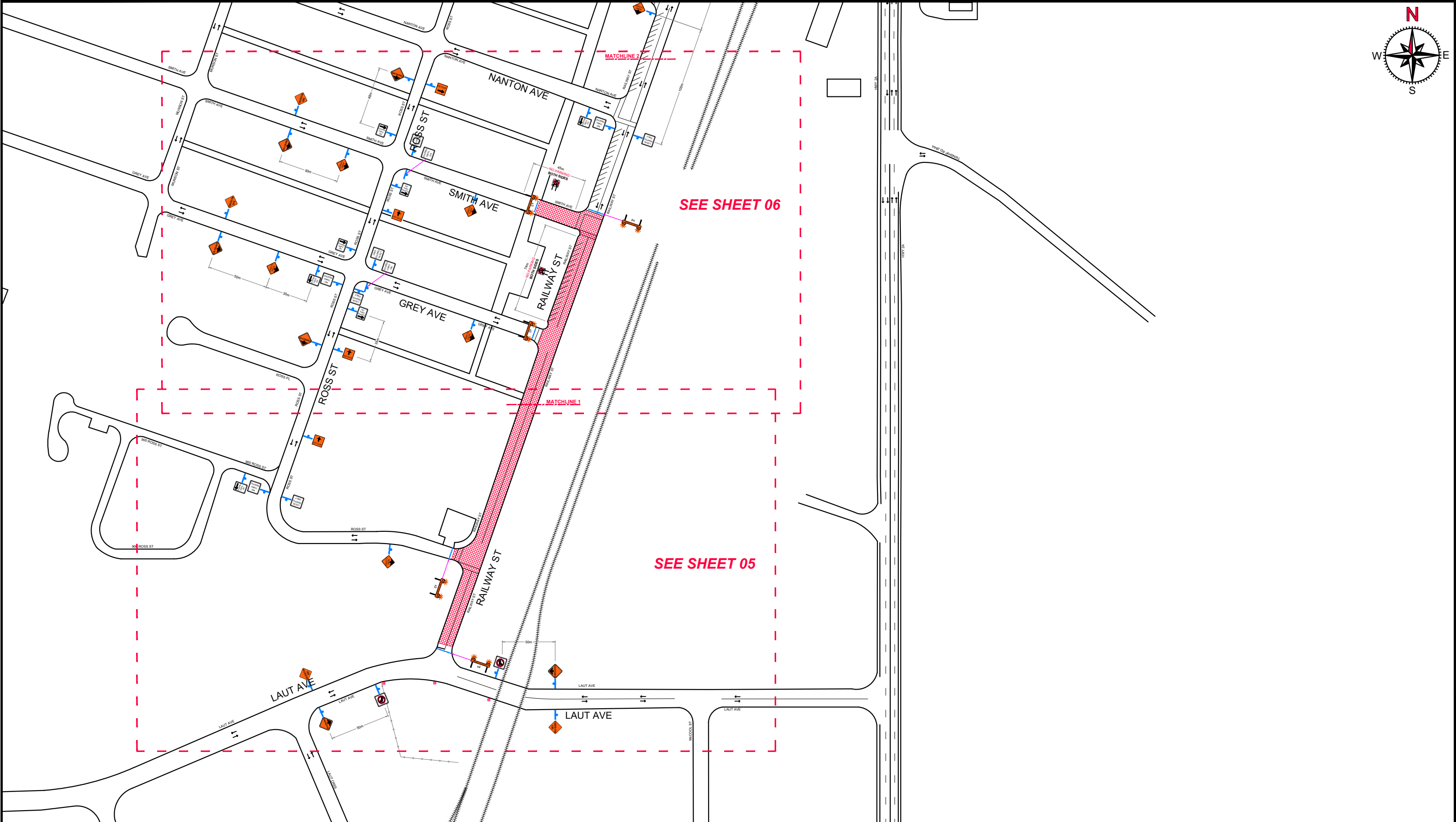
NTS
Drawing No.
ITC-20-123-001

Sheet

01
of 14

Phase 1- Business Access





SEE SHEET 06

SEE SHEET 05

Governing Authority



Contractor



Site plan Overview - Phase 2
Road Closure
Railway Street and Laut Avenue - Smith Avenue
Crossfield, Alberta

Gazetted speed



Delineator Spacing

06
meters

Date

March 17
2020

Designed

BPC
Checked
CL

Scale

NTS
Drawing No.
ITC-20-123-001

Sheet

04
of 14

© COPYRIGHT INTELLITRAFIK 2020

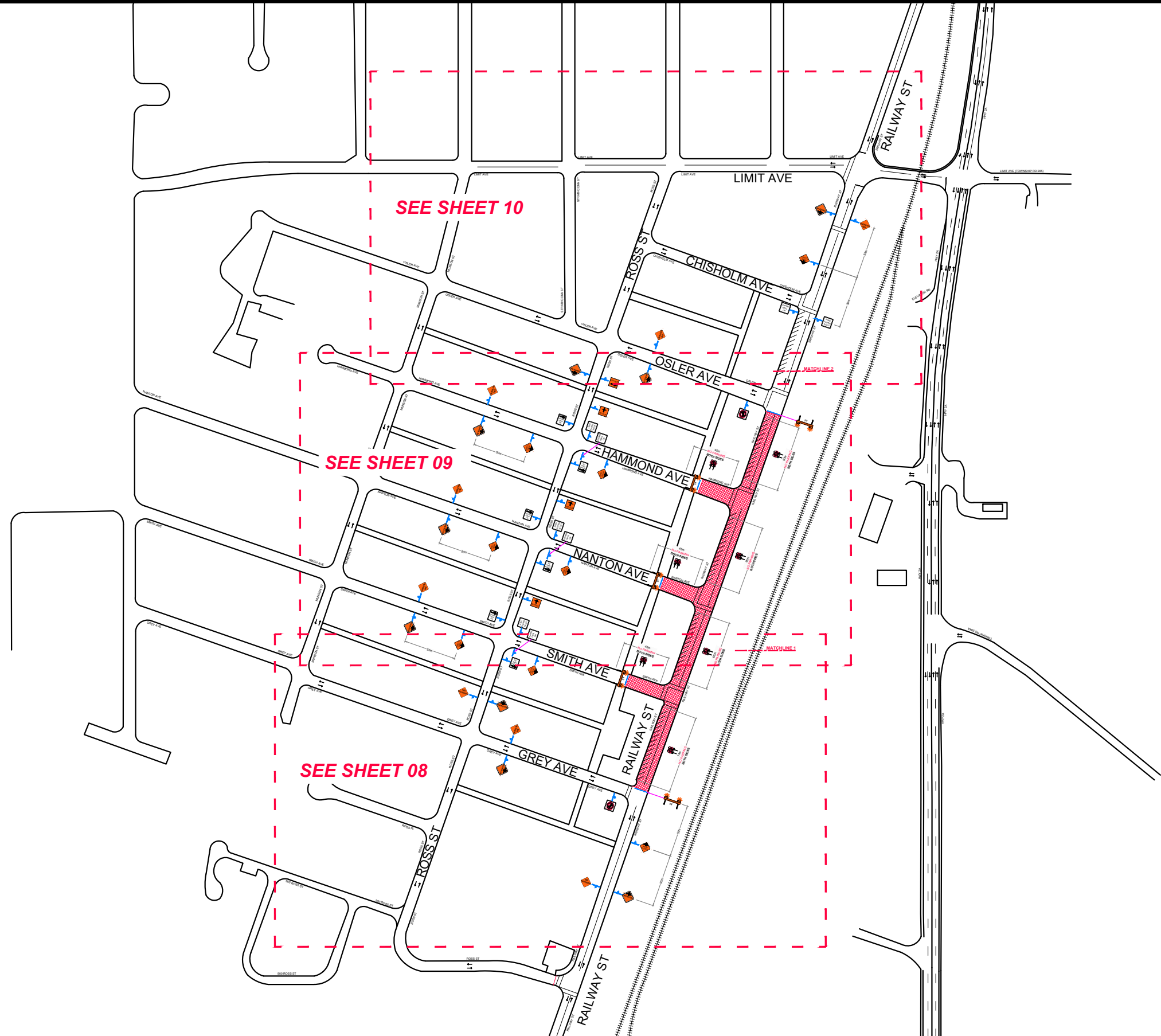


Phase 2 Business Access

Road Closed

**Laneway Access for Traxion Tire,
and Cana Corp.**

**Temporary Access Road
For Businesses East of Railway St**



© COPYRIGHT INTELLITRAFIK 2020

Governing Authority



Contractor



Site plan Overview - Phase 3
Road Closure
Railway Street and Grey Avenue - Osler Avenue
Crossfield, Alberta

Gazetted speed



Delineator Spacing

06
meters

Date

March 17
2020

Designed

BPC
Checked
CL

Scale

NTS
Drawing No.
ITC-20-123-001

Sheet

07
of 14

Phase 3 Business Access



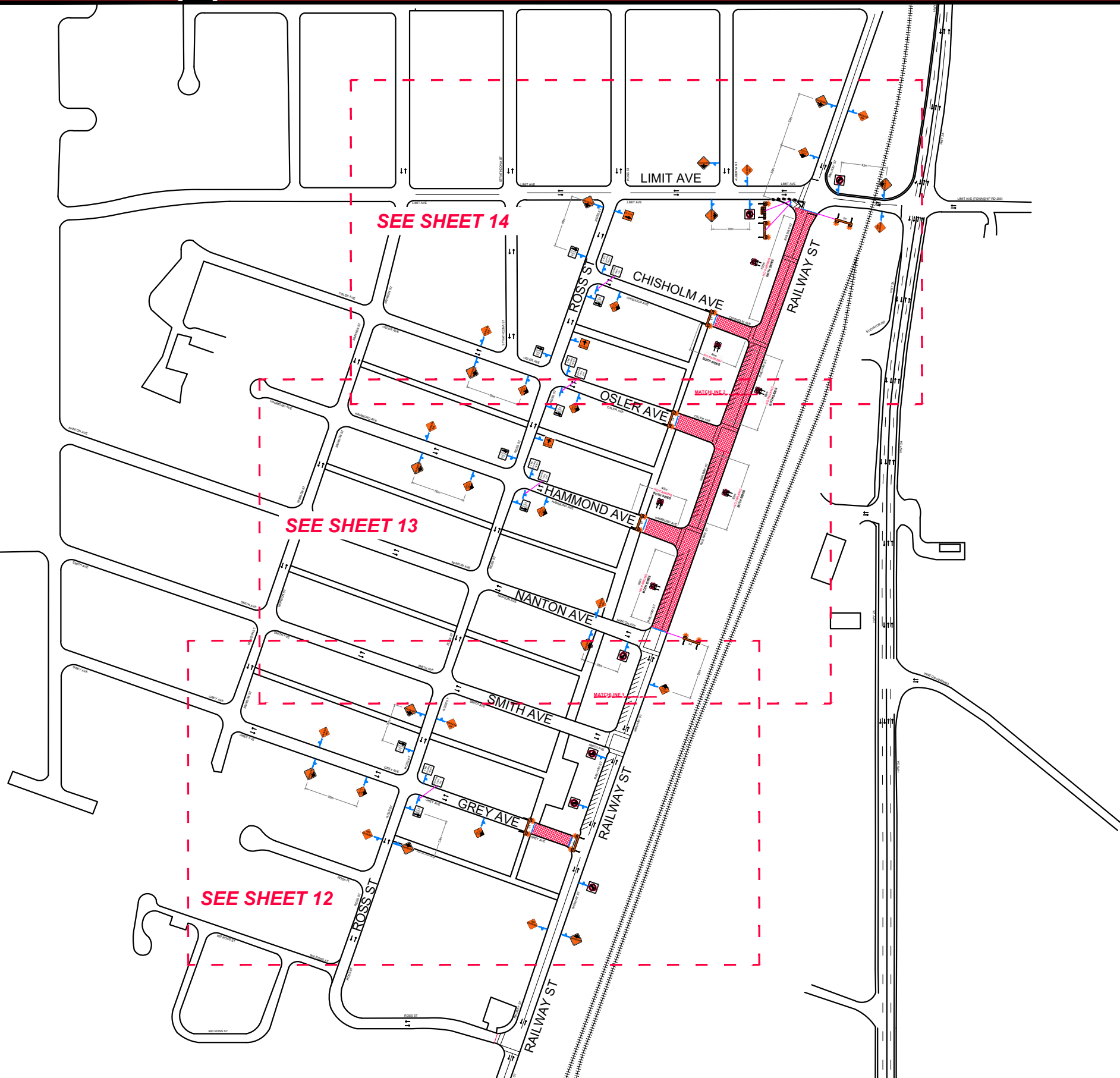
Pedestrian Pathway

Alternating Alley Access

Access to Mountain View Financial

Parking

Temporary Parking Lot Access Road



Governing Authority



Contractor



Site plan Overview - Phase 4
Road Closure
Railway Street and Grey Avenue - Limit Avenue
Crossfield, Alberta

Gazetted speed



Delineator Spacing

06
meters

Date

March 17
2020

Designed

BPC
Checked
CL

Scale

NTS
Drawing No.
ITC-20-123-001

Sheet

11
of 14

© COPYRIGHT INTELLITRAFIK 2020



Phase 4 Business Access

Pedestrian Pathway

Alternating Parking

Gas Station Vehicular Access

Alternating Vehicular Access to Mountain View Financial and Grocery Store

Parking