

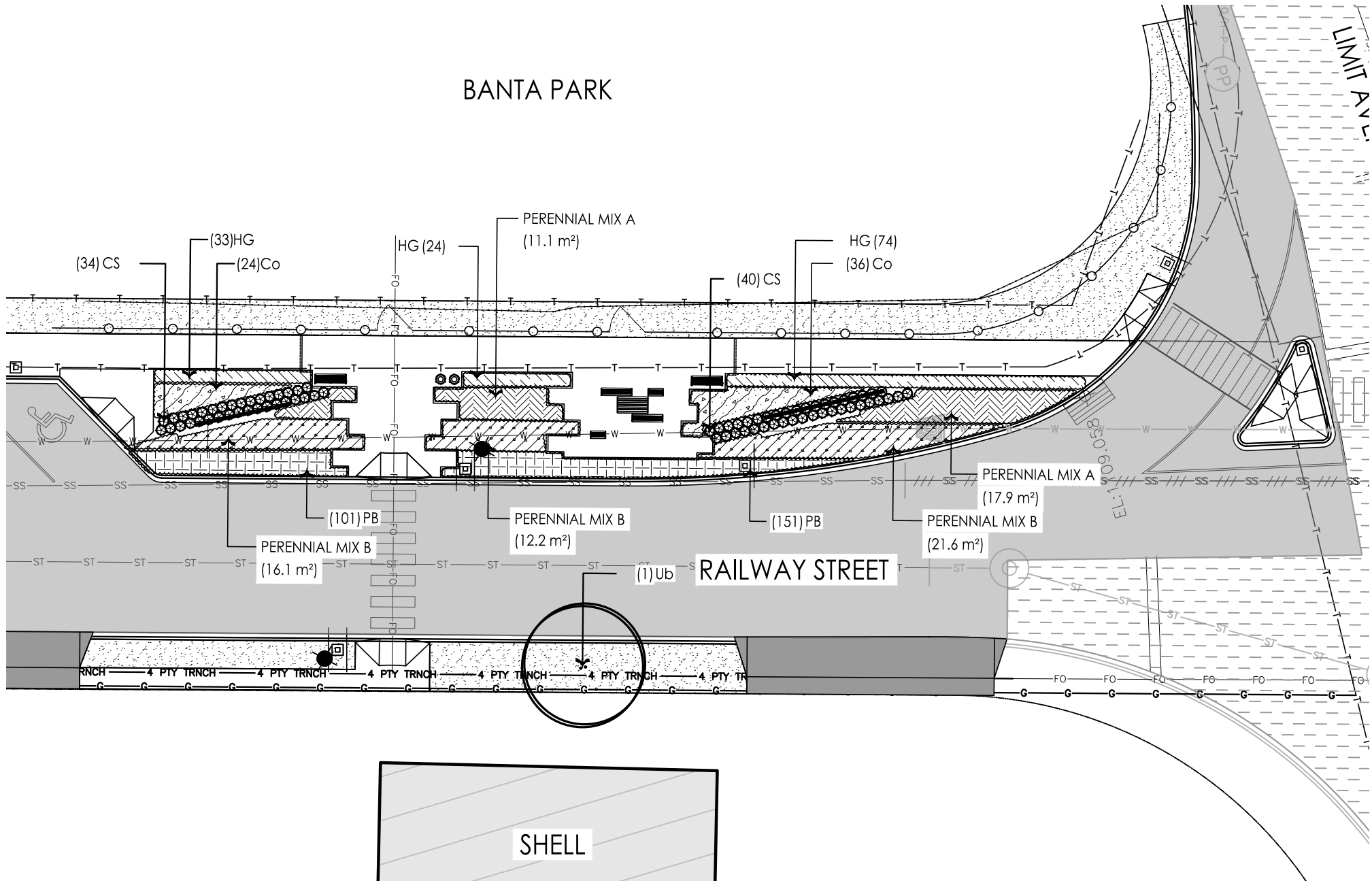


April To October 2020 (Underground & Surface Work)
May to July 2021 (Top Lift Paving & Roadway Paint Lines)

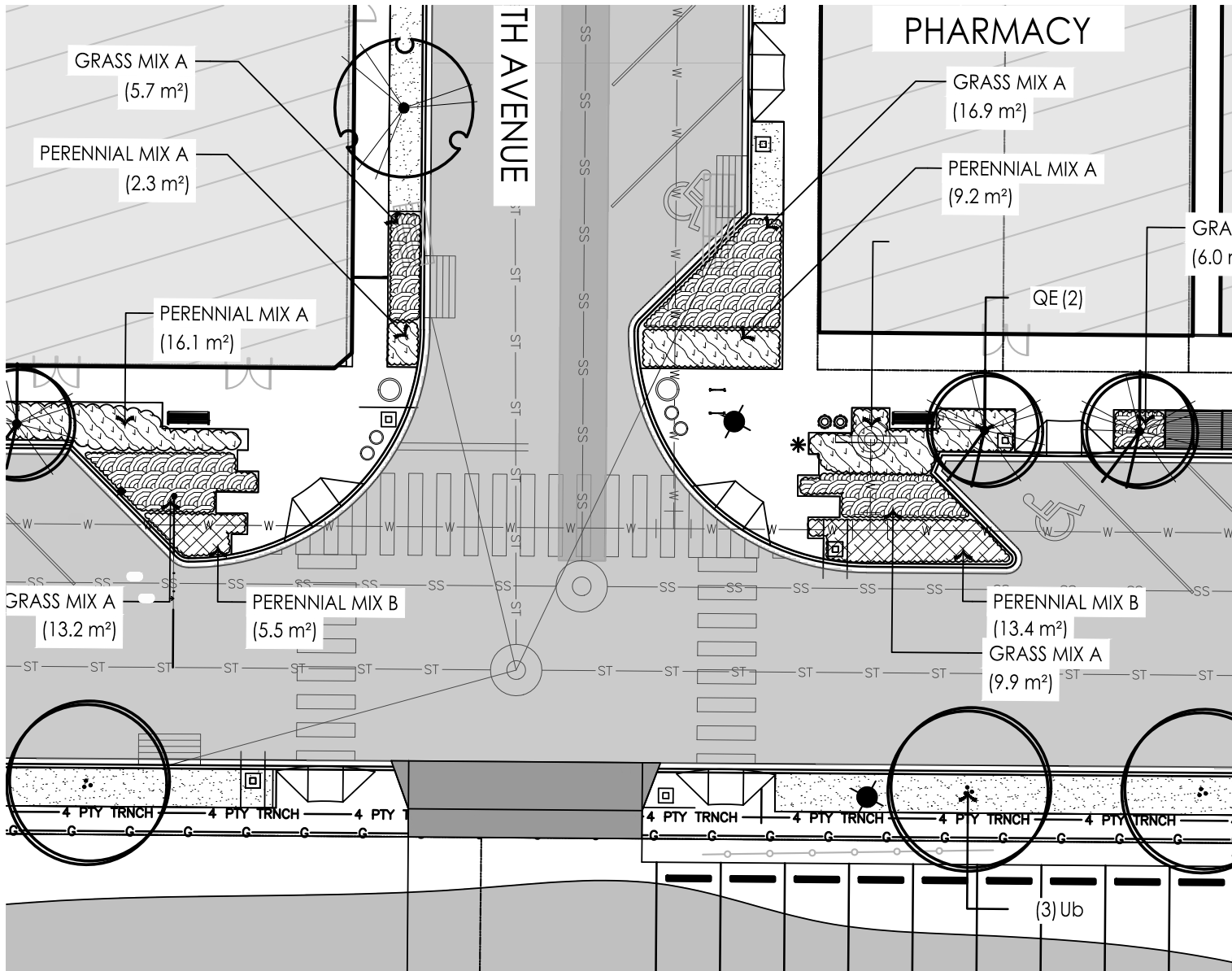


Great Projects Require Major (Temporary) Disruption
Result: Decades of Community Benefit

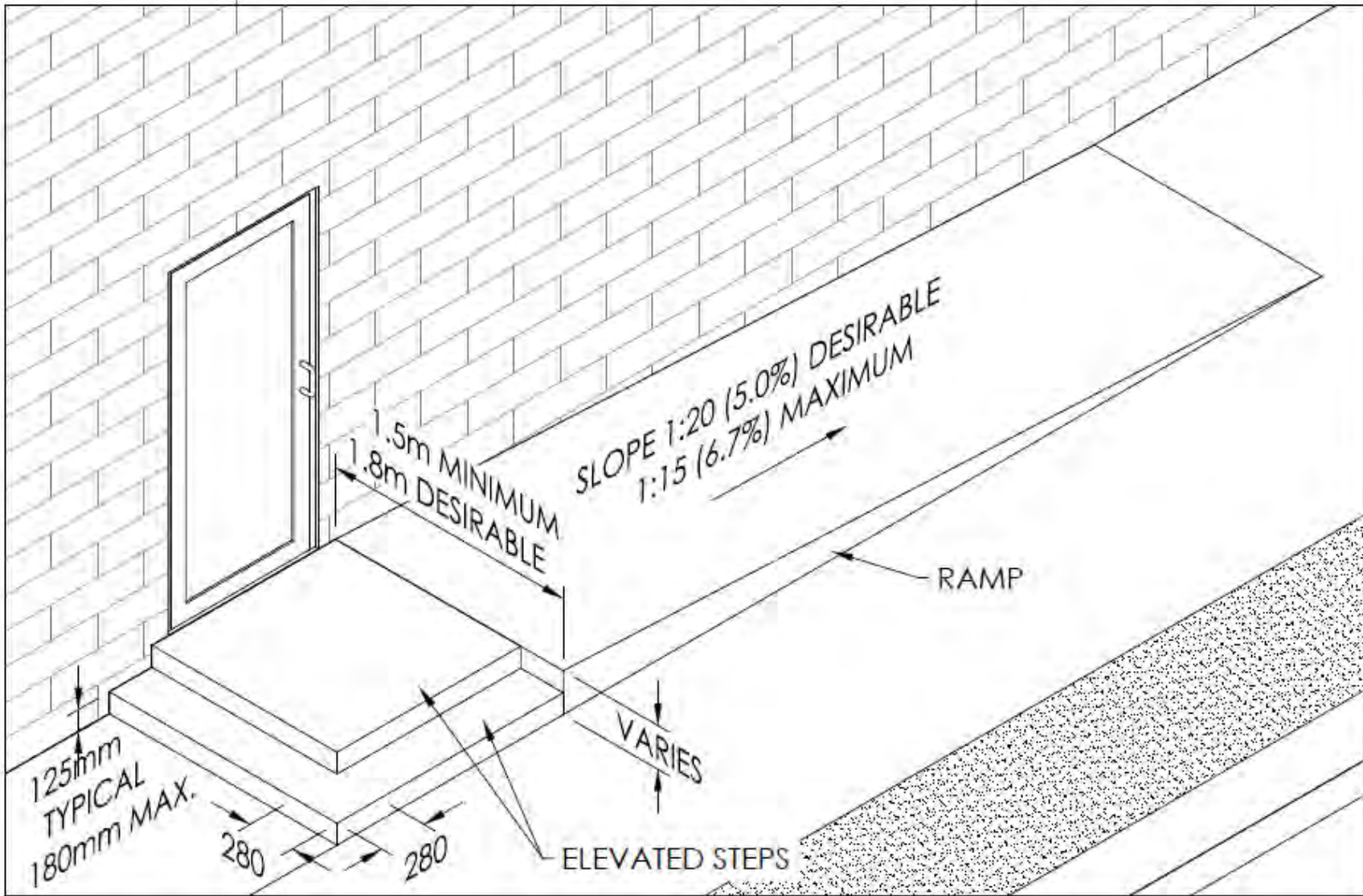
BANTA PARK



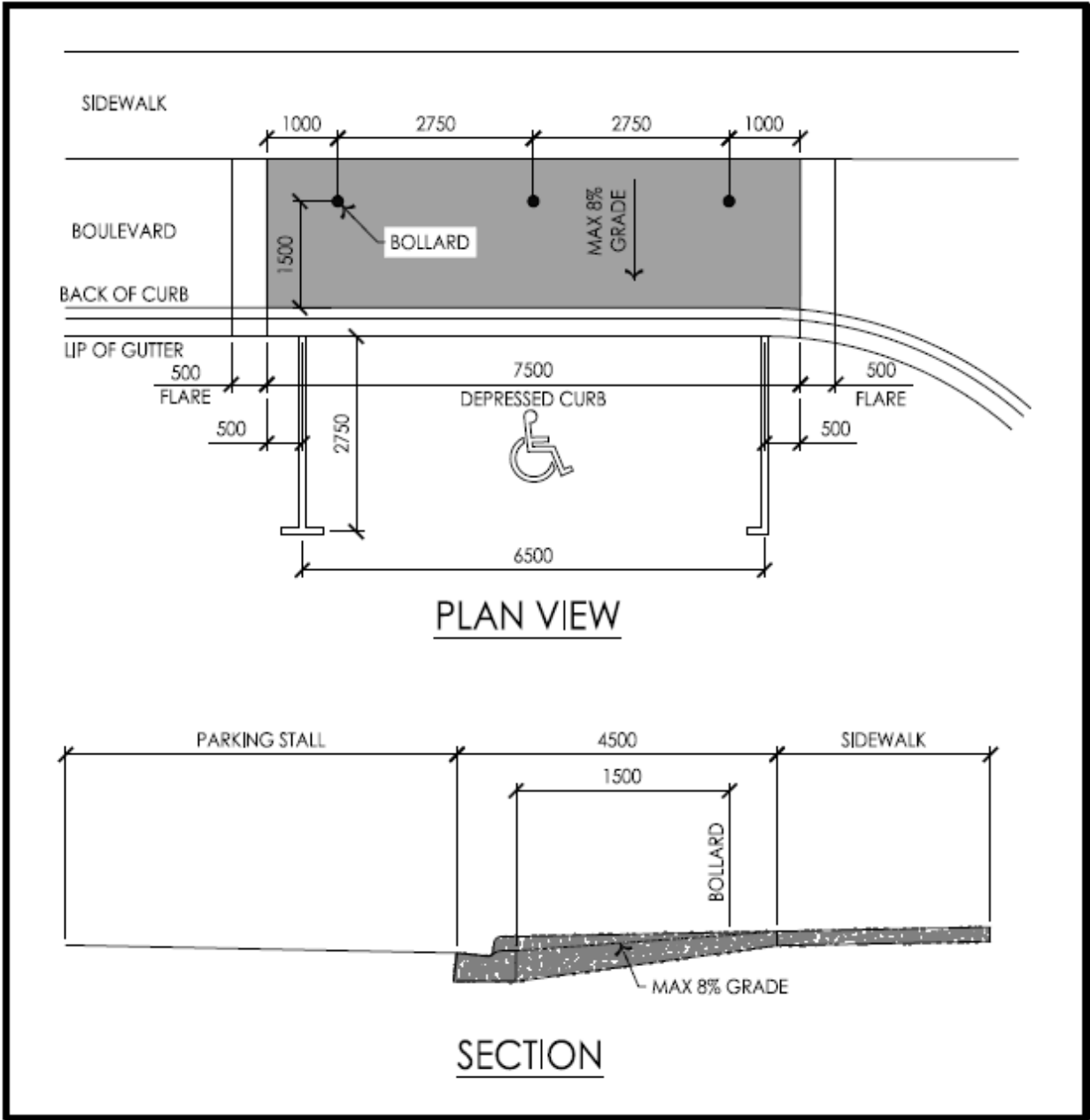
Limit Ave and Railway St Intersection with improved turn lane and enhanced landscaped entry



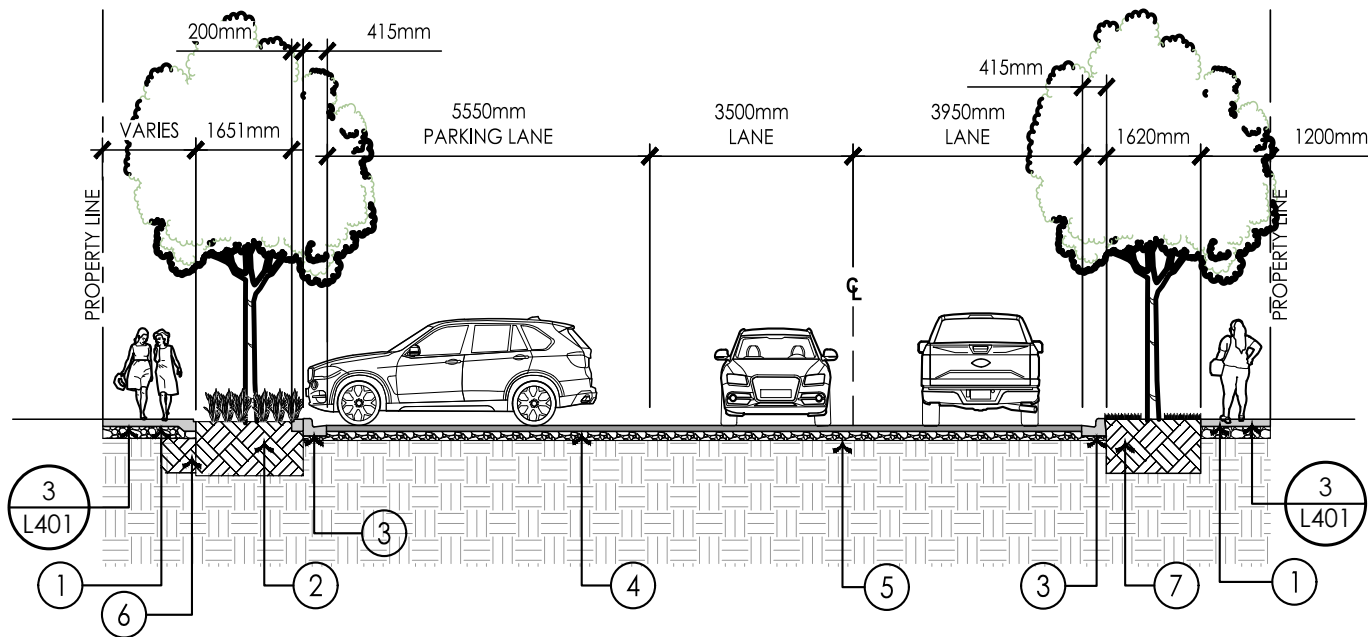
Typical intersection layout and planting design (corner of Smith Ave and Railway St)



Doorway Ramp – Installed Only In Areas Required & Coordinated With Owner



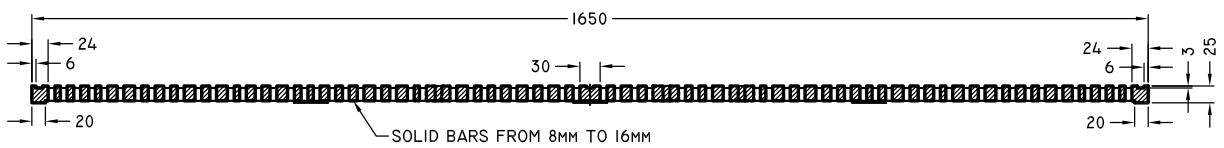
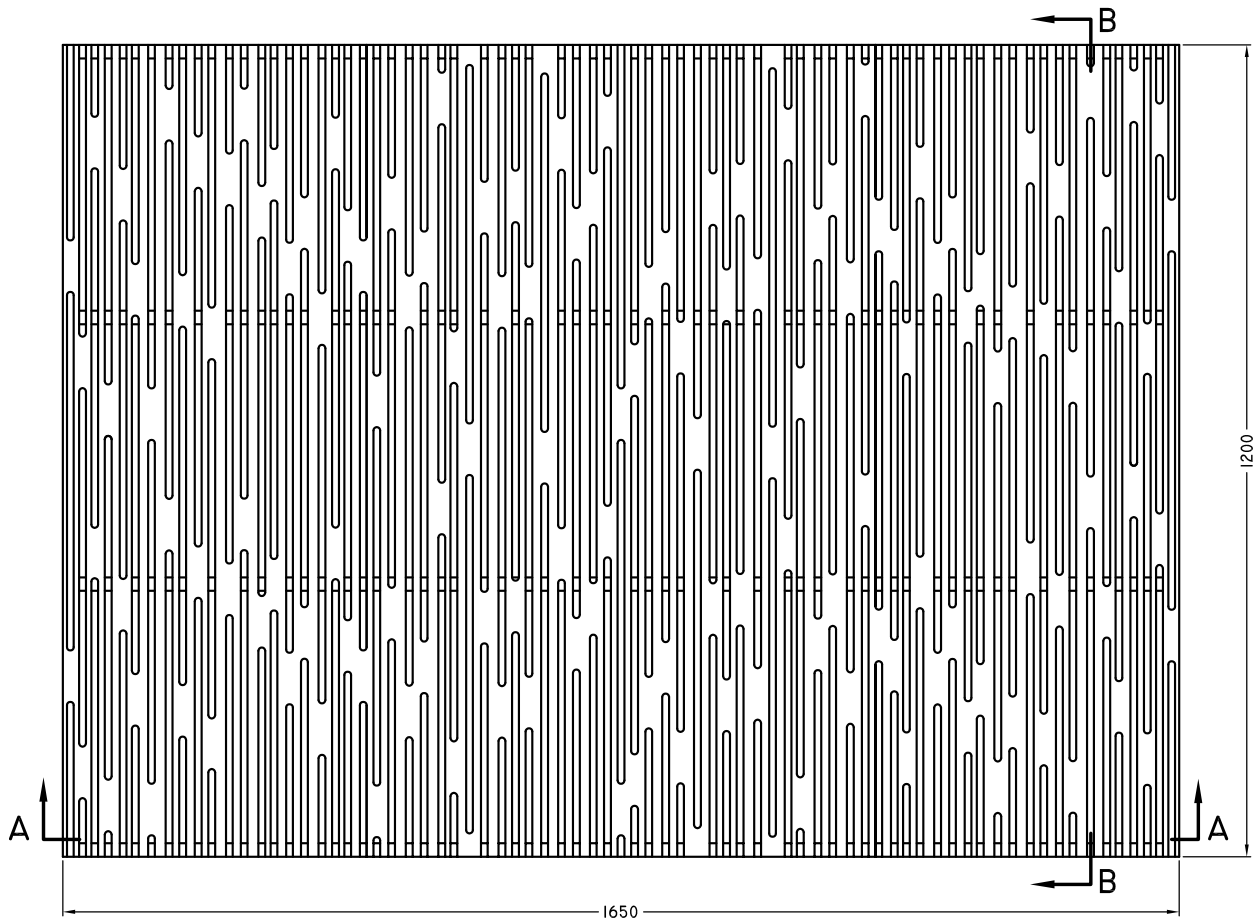
(R) Accessible On-Street Parallel Parking



- ① CONCRETE SIDEWALK. REFER TO HARDSCAPE SCHEDULE.
- ② 600mm DEPTH PLANT BED. REFER TO PLANTING PLAN.
- ③ CONCRETE CURB REFER TO ENGINEERING
- ④ ASPHALT SURFACING REFER TO ENGINEERING
- ⑤ GRANULAR SUBBASE REFER TO ENGINEERING
- ⑥ STRATAVAULT CELL
- ⑦ TREE PIT, DEPTH TO EQUAL ROOTBALL DEPTH. REFER TO CITY OF CALGARY SPECIFICATION.

42 TYPICAL ANGLED PARKING SECTION - RAILWAY STREET
SCALE: 1:100

Typical cross-section for the main business are of Railway Street



SECTION A-A

Tree grates specifically designed for Railway Street





Cluster seating table and backless benches



Backed Bench



Bike Racks